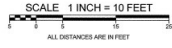


# Schedule A

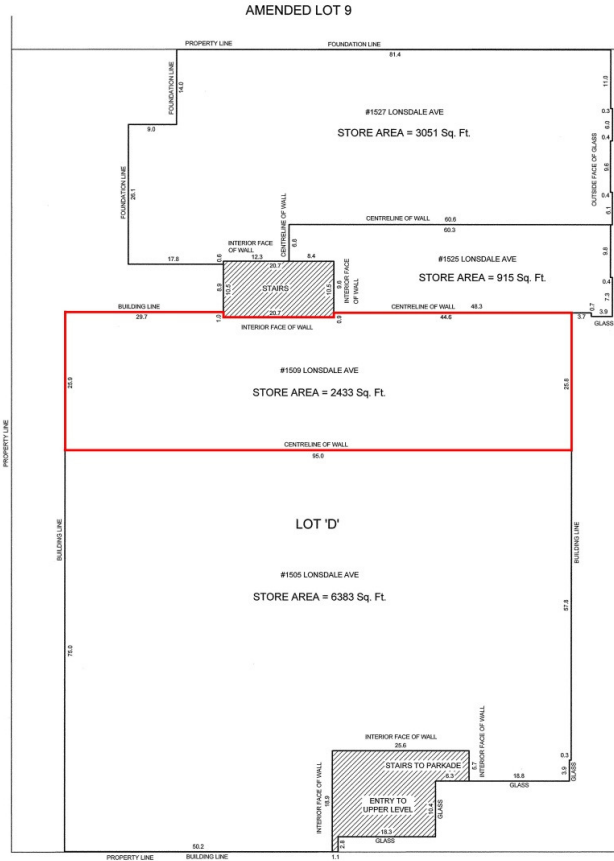
SHEET 2 OF 2

SKETCH PLAN OF LEASEHOLD OF PORTIONS OF A TWO STOREY BUILDING WITH PARKADE SITUATED ON LOT D, BLOCK 28, DL'S 548 & 549, GROUP 1, NEW WESTMINSTER DISTRICT, PLAN 15755.

CITY OF NORTH VANCOUVER  
BCGS 92G.035



## GROUND LEVEL



GROUND LEVEL		
Areas are shown in units of square feet.		
SPACE ID	USABLE AREA	RENTABLE AREA
Flat #1505 Lonsdale Ave	6383	6697
#1509 Lonsdale Ave	2433	2541
#1525 Lonsdale Ave	915	956
#1527 Lonsdale Ave	3051	3187
TOTAL	12782	13381

UPPER LEVEL		
Areas are shown in units of square feet.		
SPACE ID	USABLE AREA	RENTABLE AREA
Flat #1505 Lonsdale Ave	2556	3030
Unit 24	512	697
Unit 24.A	277	326
Unit 23	1615	1915
Unit 25	1037	1229
Unit 26	655	776
Unit 27	787	909
Building Common Area	224	N/A
TOTAL	7844	8790

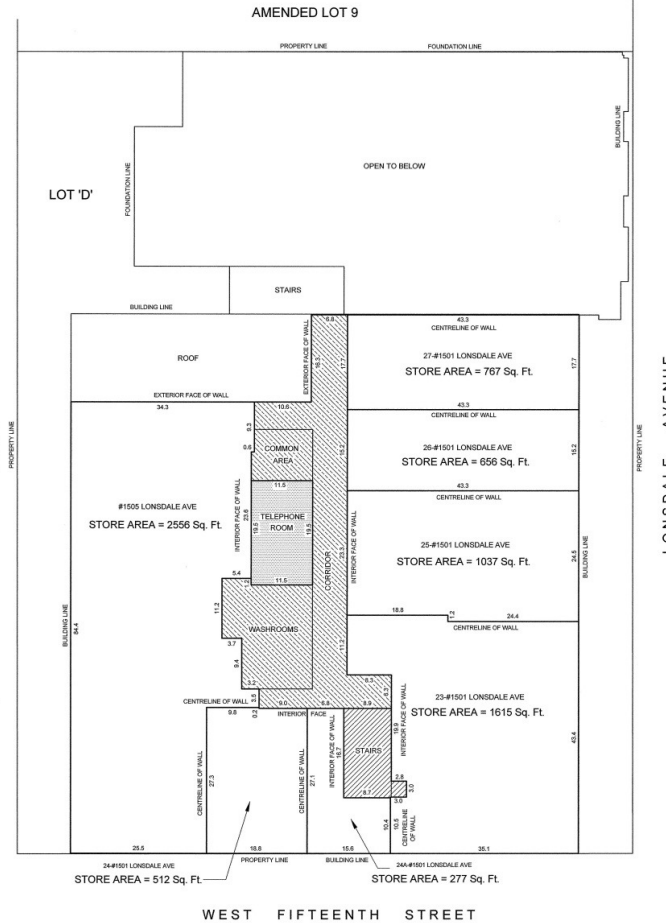
Floor Common Area = 1028

- LEGEND
- DENOTES EXCLUSIONS FROM LEASE AREA CALCULATIONS
  - DENOTES BUILDING COMMON AREA
  - DENOTES FLOOR COMMON AREA

BENNETT LAND SURVEYING LTD.  
B.C. LAND SURVEYORS  
8021 - 275 HILLBUSH  
NORTH VANCOUVER, B.C.  
V7P 1K9  
PH: 604-460-4563  
FX: 604-460-4566  
www.bennettlandsurvey.com  
FR862 P73 (TC)

NOTE:  
ALL ANGLES ARE 90° AND MULTIPLES THEREOF, UNLESS OTHERWISE SHOWN.

## UPPER LEVEL



DATE: April 26, 2010  
MICHAEL S. DITZ, B.C.L.S.