

S h e l t e r C o v e R e s i d e n c e

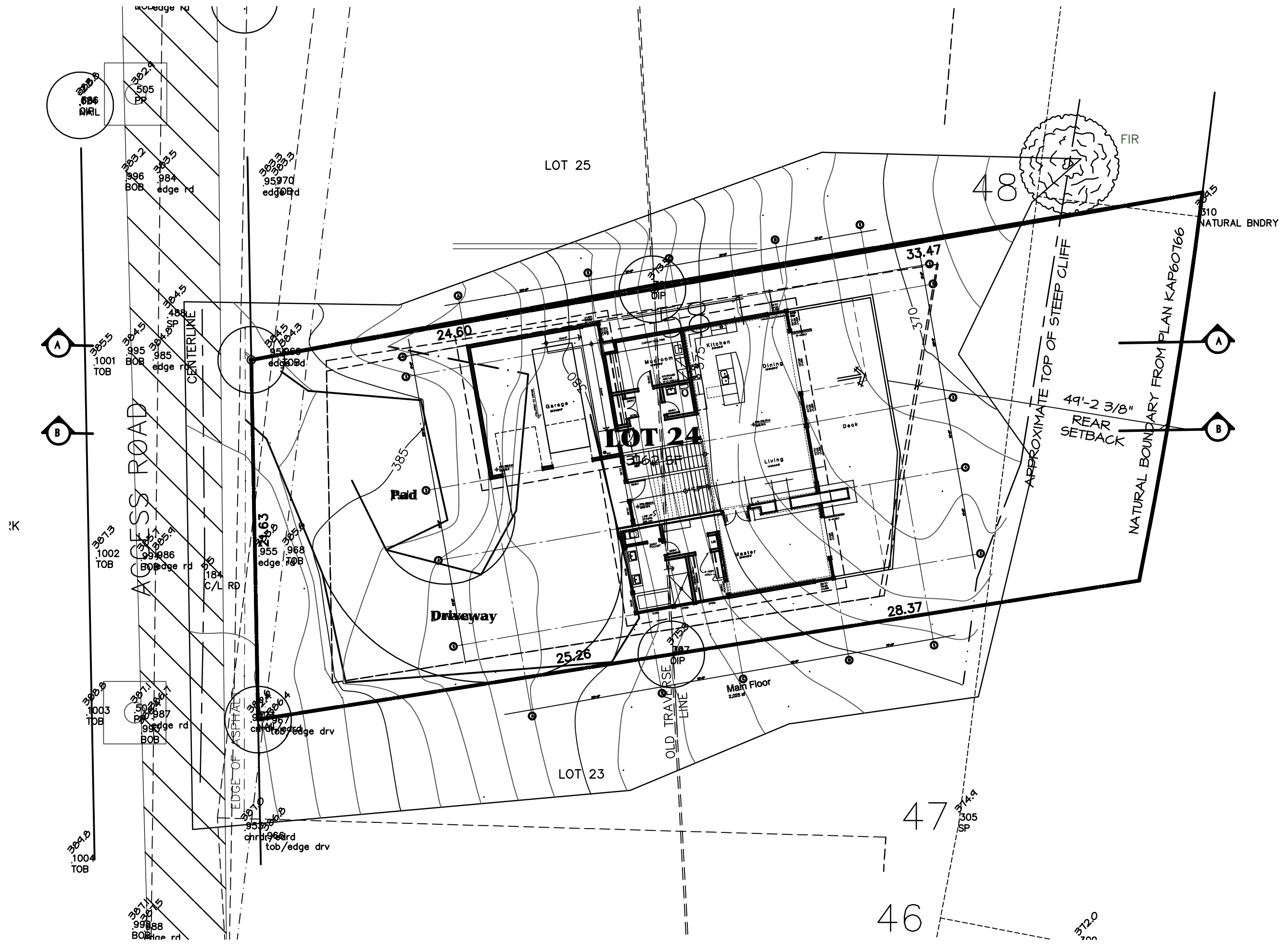
*Address: Lot 24, Okanagan Lake
February 8, 2007*

**Lot 24
Shelter Cove**

Central Okanagan
British Columbia

For
The Fomans

Contract
Drawn
Checked
Date JANUARY 14, 2007
Scale
Sheet Number








**Lot 24
Shelter Cove**
Central Okanagan
British Columbia

For
The Fomans

Site Plan

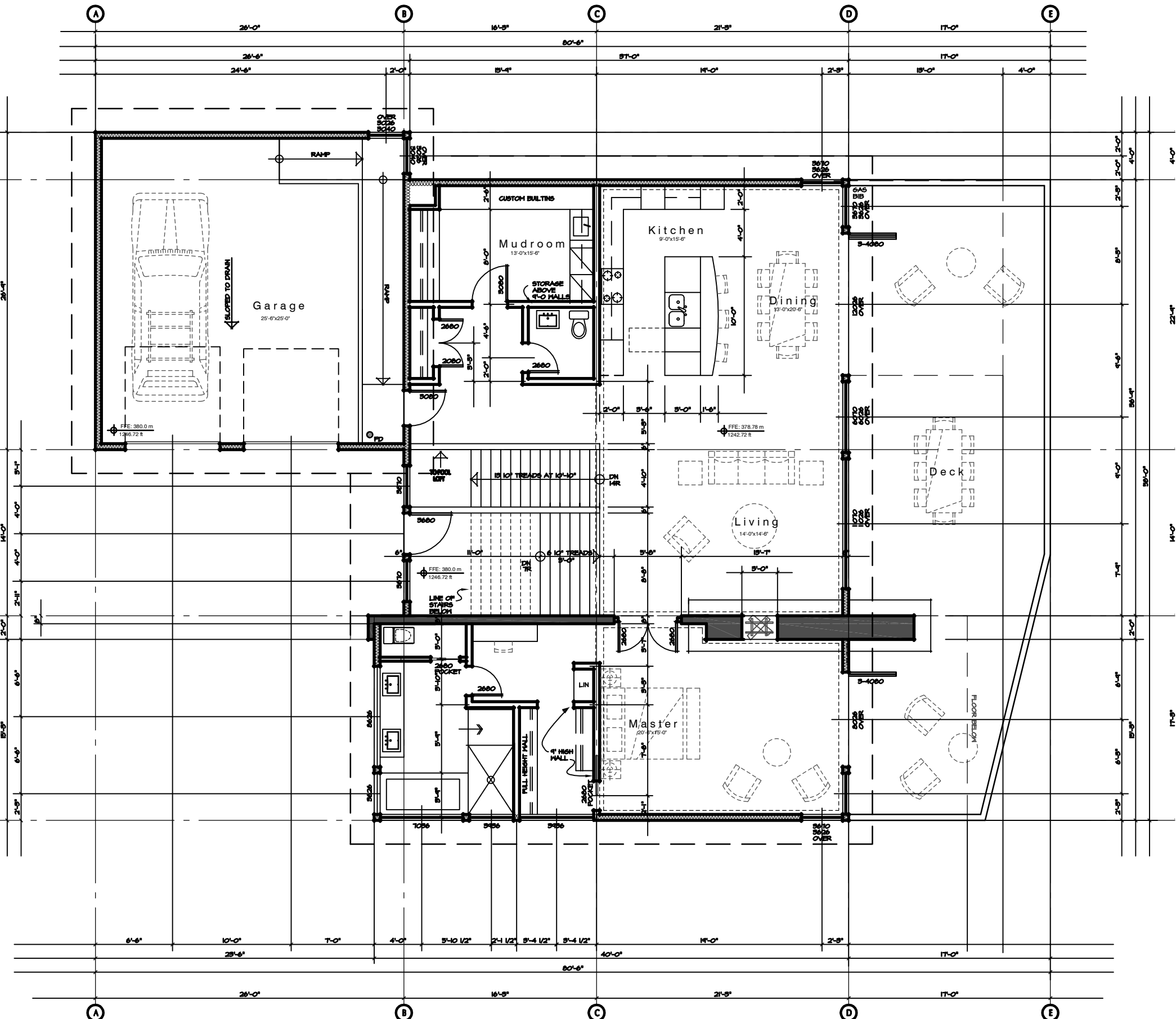
Contract
Drawn
Checked
Date JANUARY 14, 2007
Scale 1/8" = 1'-0"
Sheet Number

Wall Legend

-  TYPICAL EXTERIOR WALL ASSEMBLY
EXTERIOR STUCCO (REFER TO ELEVATIONS) ON
THO LAYERS OF 50 MIN. PAPER ON
1/2" PLYWOOD SHEATHING (REFER TO STRUCT. DINGS) ON
2x6" MOOD STUDS AT 16" O.C. (REFER TO STRUCT. DINGS)
WITH R20 BATT INSULATION & 6 MIL POLY VAPOUR BARRIER - U.V.
1/2" TYPE 'X' GYPSUM HALIBOARD, PAINTED
(REFER TO ELEVATIONS FOR SIDING TYPES)
-  INTERIOR PARTITION WALL
1/2" GYPSUM HALIBOARD PAINTED BOTH SIDES OF
2 X 4" STUDS U.N.O. AT 16" O.C. (REFER TO STRUCT. DINGS)
-  VENTILATED EXTERIOR WALL ASSEMBLY
EXTERIOR MOOD SIDING (REFER TO ELEVATIONS) ON
THO LAYERS OF 50 MIN. PAPER ON
1/2" PLYWOOD SHEATHING (REFER TO STRUCT. DINGS) ON
2x6" MOOD STUDS AT 16" O.C. (REFER TO STRUCT. DINGS)
VENTS AT TOP & BOTTOM OF WALL
-  FOUNDATION WALL WITH FURRINGS
2 COATS OF DAM-PROOFING OR
WATERPROOF MEMBRANE IV PROTECTION BOARD ON
8" CONCRETE WALL (REFER TO STRUCT. DINGS)
R12 5M RIGID INSULATOR GUID
PROTECTION ED REQD FOR RIGID INSUL - TYP
-  INSULATED INTERIOR WALL
1/2" GYPSUM HALIBOARD PAINTED BOTH SIDES OF
2 X 4" STUDS AT 16" O.C. (REFER TO STRUCT. DINGS)
R20 BATT INSULATION WITH
6 MIL POLY VAPOUR BARRIER ON WARM SIDE - TYP

Notes

- ALL EXTERIOR WALLS DIMENSIONED TO FACE OF CONCRETE AND PLYWOOD SHEATHING
- ALL INTERIOR WALLS DIMENSIONED TO CENTRE LINE OF WALLS
- ALL WINDOWS & DOORS DIMENSIONED TO CENTRE LINE
- FOR SHEAR WALL LOCATIONS REFER TO STRUCT. DINGS.








**Lot 24
Shelter Cove**
Central Okanagan
British Columbia
For
The Fomans
Upper Floor Plan

 **Main Floor**
2,025 sf

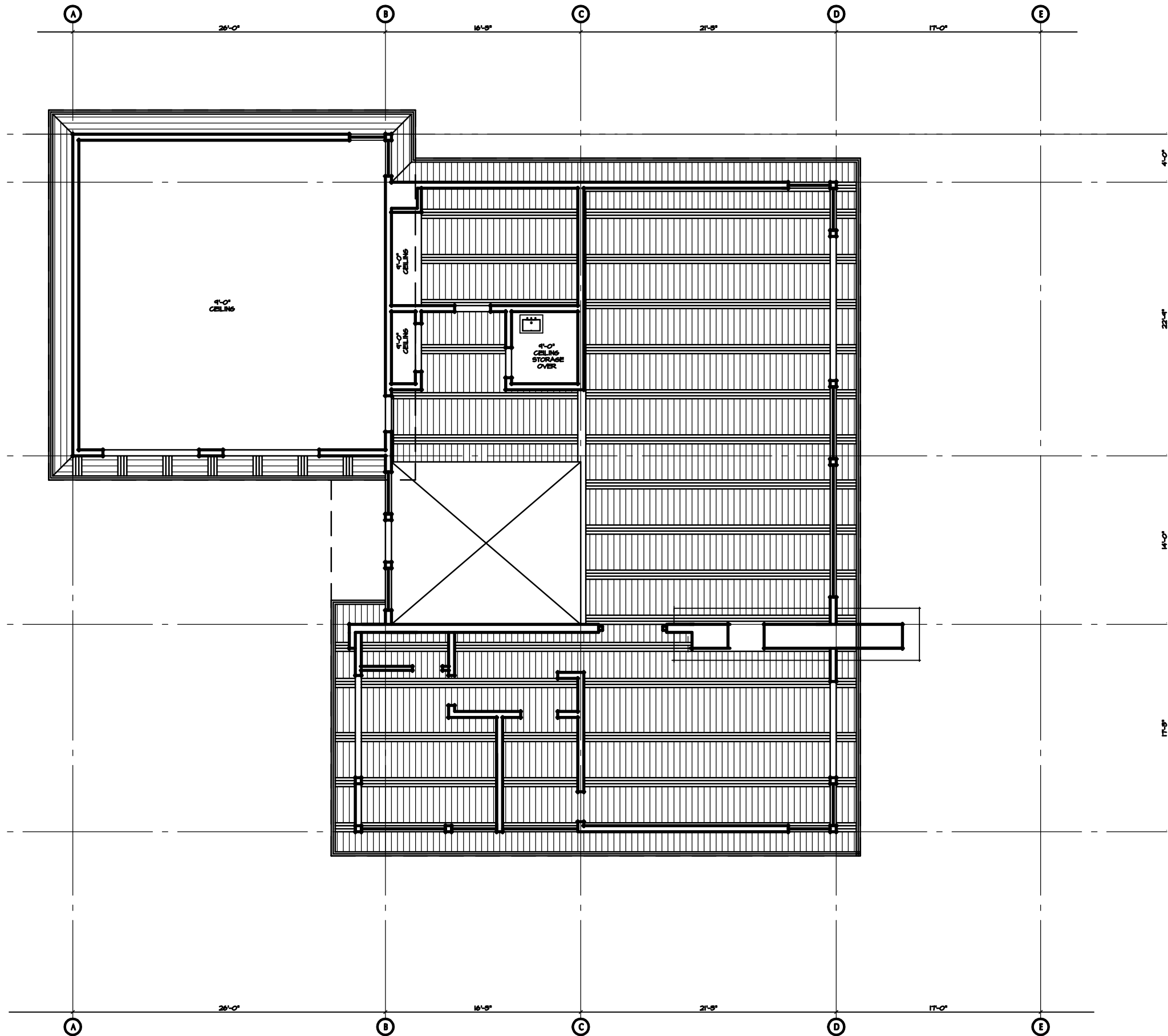
Contract
Drawn
Checked
Date JANUARY 14, 2007
Scale 1/4" = 1'-0"
Sheet Number

Wall Legend

- 
TYPICAL EXTERIOR WALL ASSEMBLY
 EXTERIOR STUCCO (REFER TO ELEVATIONS) ON
 TWO LAYERS OF 30 MIN. PAPER ON
 1/2" PLYWOOD SHEATHING (REFER TO STRUCT. DINGS) ON
 2x6" MOOD STUDS AT 16" O.C. (REFER TO STRUCT. DINGS)
 WITH R20 BATT INSULATION & 6 MIL POLY VAPOUR BARRIER - U.V.
 1/2" TYPE 'X' GYPSUM HALIBOARD, PAINTED
 (REFER TO ELEVATIONS FOR SIDING TYPES)
- 
INTERIOR PARTITION WALL
 1/2" GYPSUM HALIBOARD PAINTED BOTH SIDES OF
 2 X 4" STUDS U.N.O. AT 16" O.C. (REFER TO STRUCT. DINGS)
- 
VENTILATED EXTERIOR WALL ASSEMBLY
 EXTERIOR MOOD SIDING (REFER TO ELEVATIONS) ON
 TWO LAYERS OF 30 MIN. PAPER ON
 1/2" PLYWOOD SHEATHING (REFER TO STRUCT. DINGS) ON
 2x6" MOOD STUDS AT 16" O.C. (REFER TO STRUCT. DINGS)
 VENTS AT TOP & BOTTOM OF WALL
- 
FOUNDATION WALL WITH FURRINGS
 2 COATS OF DAMPROOFING OR
 WATERPROOF MEMBRANE W/ PROTECTION BOARD ON
 8" CONCRETE WALL (REFER TO STRUCT. DINGS)
 R12 5M RIGID INSULATION GLUED
 PROTECTION ED REGD FOR RIGID INSUL - TYP
- 
INSULATED INTERIOR WALL
 1/2" GYPSUM HALIBOARD PAINTED BOTH SIDES OF
 2 X 4" STUDS AT 16" O.C. (REFER TO STRUCT. DINGS)
 R20 BATT INSULATION WITH
 6 MIL POLY VAPOUR BARRIER ON WARM SIDE -

Notes

- ALL EXTERIOR WALLS DIMENSIONED TO FACE OF CONCRETE AND PLYWOOD SHEATHING
- ALL INTERIOR WALLS DIMENSIONED TO CENTRE LINE OF WALLS
- ALL WINDOWS & DOORS DIMENSIONED TO CENTRE LINE
- FOR SHEAR WALL LOCATIONS REFER TO STRUCT. DINGS.



Lot 24 Shelter Cove






Central Okanagan
British Columbia

For
The Formans

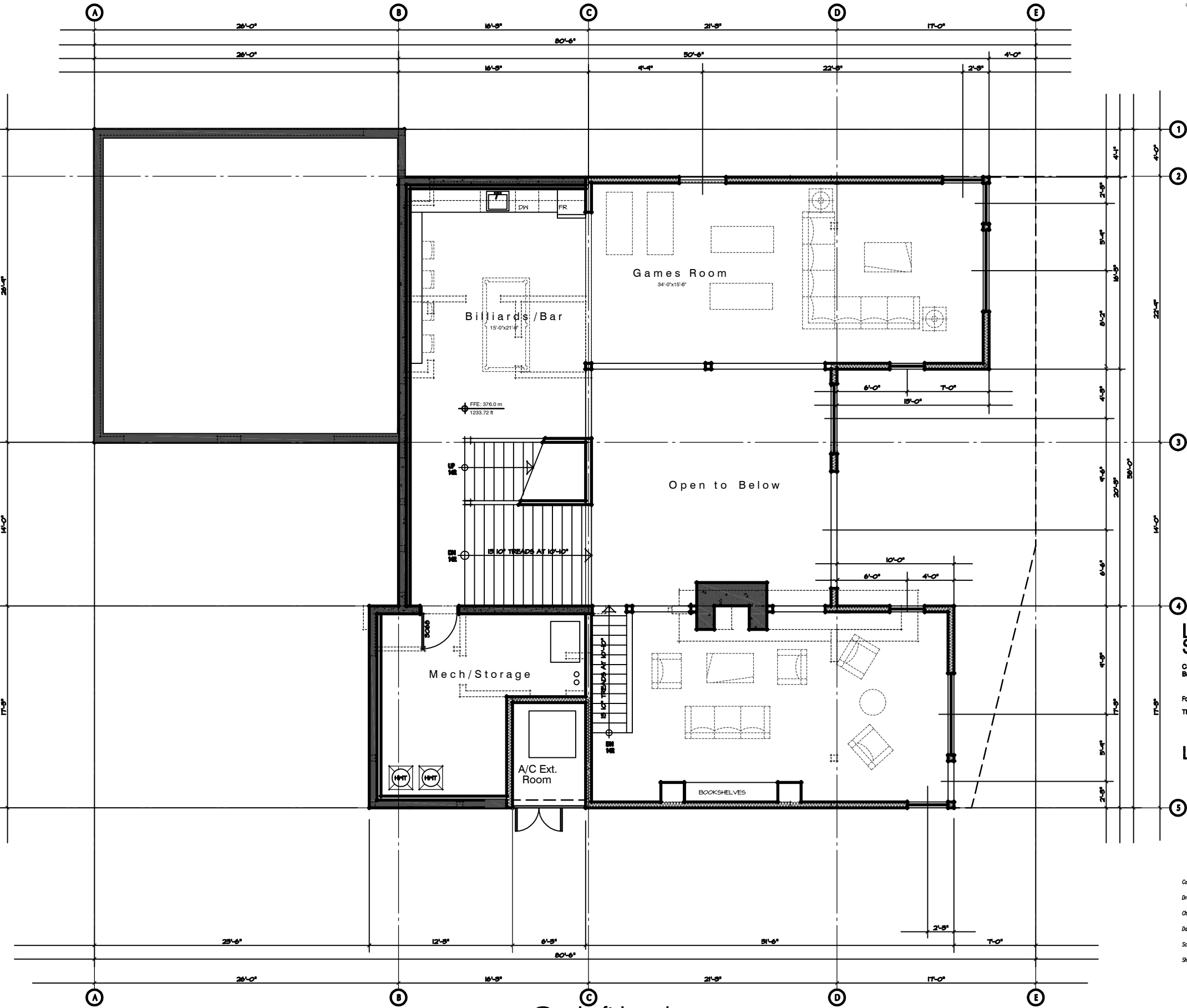
Reflected Ceiling Plan Main Floor

Contract
Drawn
Checked
Date JANUARY 14, 2007
Scale 1/4" = 1'-0"
Sheet Number

Wall Legend

-  TYPICAL EXTERIOR WALL ASSEMBLY
EXTERIOR STUCCO (REFER TO ELEVATIONS) ON TWO LAYERS OF 30 MIN. PAPER ON 1/2" PLYWOOD SHEATHING (REFER TO STRUCT. DWGS.) ON 2x8" MOOD STUDS AT 16" O.C. (REFER TO STRUCT. DWGS.) WITH R20 BATT INSULATION & 6 MIL. POLY VAPOUR BARRIER - U.V. 1/2" TYPE 'X' GYPSUM HALLBOARD, PAINTED (REFER TO ELEVATIONS FOR SIDING TYPES)
-  INTERIOR PARTITION WALL
1/2" GYPSUM HALLBOARD PAINTED BOTH SIDES OF 2 X 4" STUDS U.N.O. AT 16" O.C. (REFER TO STRUCT. DWGS.)
-  VENTILATED EXTERIOR WALL ASSEMBLY
EXTERIOR HOOD SIDING (REFER TO ELEVATIONS) ON TWO LAYERS OF 30 MIN. PAPER ON 1/2" PLYWOOD SHEATHING (REFER TO STRUCT. DWGS.) ON 2x8" MOOD STUDS AT 16" O.C. (REFER TO STRUCT. DWGS.) VENTS AT TOP & BOTTOM OF WALL
-  FOUNDATION WALL WITH FURRINGS
2 COATS OF DAMPROOFING OR WATERPROOF MEMBRANE W/ PROTECTION BOARD ON 8" CONCRETE WALL (REFER TO STRUCT. DWGS.) R12 5M RIGID INSULATION GLUED PROTECTION ED REQ'D FOR RIGID INSL. - TYP
-  INSULATED INTERIOR WALL
1/2" GYPSUM HALLBOARD PAINTED BOTH SIDES OF 2 X 4" STUDS AT 16" O.C. (REFER TO STRUCT. DWGS.) R20 BATT INSULATION WITH 6 MIL. POLY VAPOUR BARRIER ON WARM SIDE - U.V.

Notes
ALL EXTERIOR WALLS DIMENSIONED TO FACE OF CONCRETE AND PLYWOOD SHEATHING
ALL INTERIOR WALLS DIMENSIONED TO CENTRE LINE OF WALLS
ALL WINDOWS & DOORS DIMENSIONED TO CENTRE LINE
FOR SHEAR WALL LOCATIONS REFER TO STRUCT. DWGS.



Lot 24 Shelter Cove
Central Okanagan
British Columbia
For
The Fomans
Loft Level

Contract
Drawn
Checked
Date JANUARY 14, 2007
Scale 1/4" = 1'-0"
Sheet Number

Wall Legend

TYPICAL EXTERIOR WALL ASSEMBLY
 EXTERIOR STUCCO (REFER TO ELEVATIONS) ON
 TWO LAYERS OF 50 MIN. PAPER ON
 1/2" PLYWOOD SHEATHING (REFER TO STRUCT. DMS.) ON
 2x6" WOOD STUDS AT 16" O.C. (REFER TO STRUCT. DMS.)
 WITH R20 BATT INSULATION & 6 MIL POLY VAPOUR BARRIER - U.V.
 1/2" TYPE 'X' GYPSUM HALIBOARD, PAINTED
 (REFER TO ELEVATIONS FOR SIDING TYPES)

INTERIOR PARTITION WALL
 1/2" GYPSUM HALIBOARD PAINTED BOTH SIDES OF
 2 X 4" STUDS U.N.O. AT 16" O.C. (REFER TO STRUCT. DMS.)

VENTILATED EXTERIOR WALL ASSEMBLY
 EXTERIOR WOOD SIDING (REFER TO ELEVATIONS) ON
 TWO LAYERS OF 50 MIN. PAPER ON
 1/2" PLYWOOD SHEATHING (REFER TO STRUCT. DMS.) ON
 2x6" WOOD STUDS AT 16" O.C. (REFER TO STRUCT. DMS.)
 VENTS AT TOP & BOTTOM OF WALL

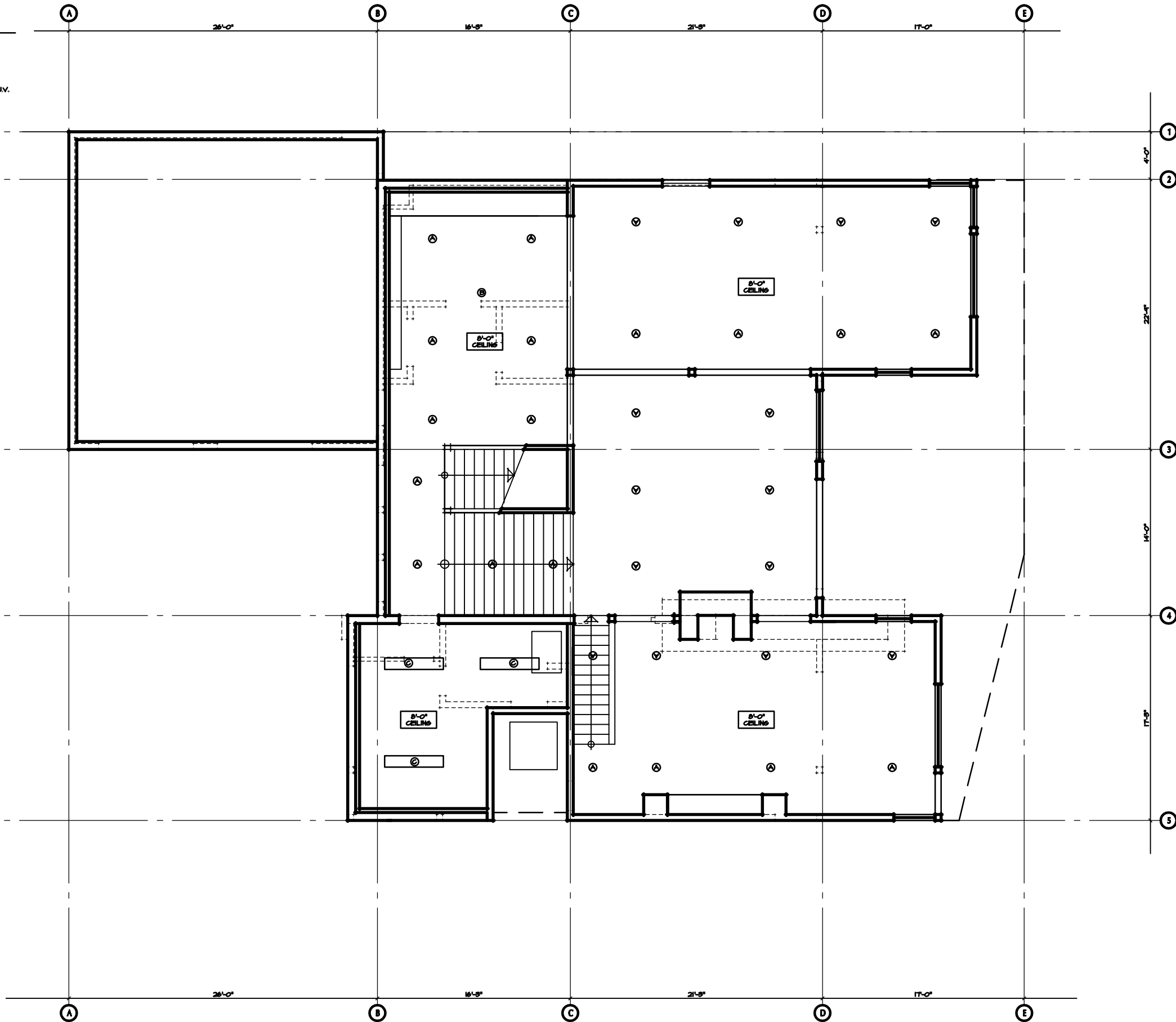
FOUNDATION WALL WITH FURRING
 2 COATS OF DAM-PROOFING OR
 WATERPROOF MEMBRANE W/ PROTECTION BOARD ON
 8" CONCRETE WALL (REFER TO STRUCT. DMS.)
 R12 5M RIGID INSULATOR GLUED
 PROTECTION BOARD FOR RIGID INSUL - TYP

AT GRAVEL SPACES:
 PROVIDE R12 RIGID INSULATION ON INTERIOR
 SIDE OF PERIMETER FOUNDATION WALL
 TO MIN 2'-0" BELOW GRADE

INSULATED INTERIOR WALL
 1/2" GYPSUM HALIBOARD PAINTED BOTH SIDES OF
 2 X 4" STUDS AT 16" O.C. (REFER TO STRUCT. DMS.)
 R20 BATT INSULATION WITH
 6 MIL POLY VAPOUR BARRIER ON WARM SIDE - U.V.

Notes

ALL EXTERIOR WALLS DIMENSIONED TO FACE OF
 CONCRETE AND PLYWOOD SHEATHING
 ALL INTERIOR WALLS DIMENSIONED TO CENTRE
 LINE OF WALLS
 ALL WINDOWS & DOORS DIMENSIONED TO CENTRE LINE
 FOR SHEAR WALL LOCATIONS REFER TO STRUCT. DMS.



Lot 24 Shelter Cove






Central Okanagan
British Columbia

For
The Formans

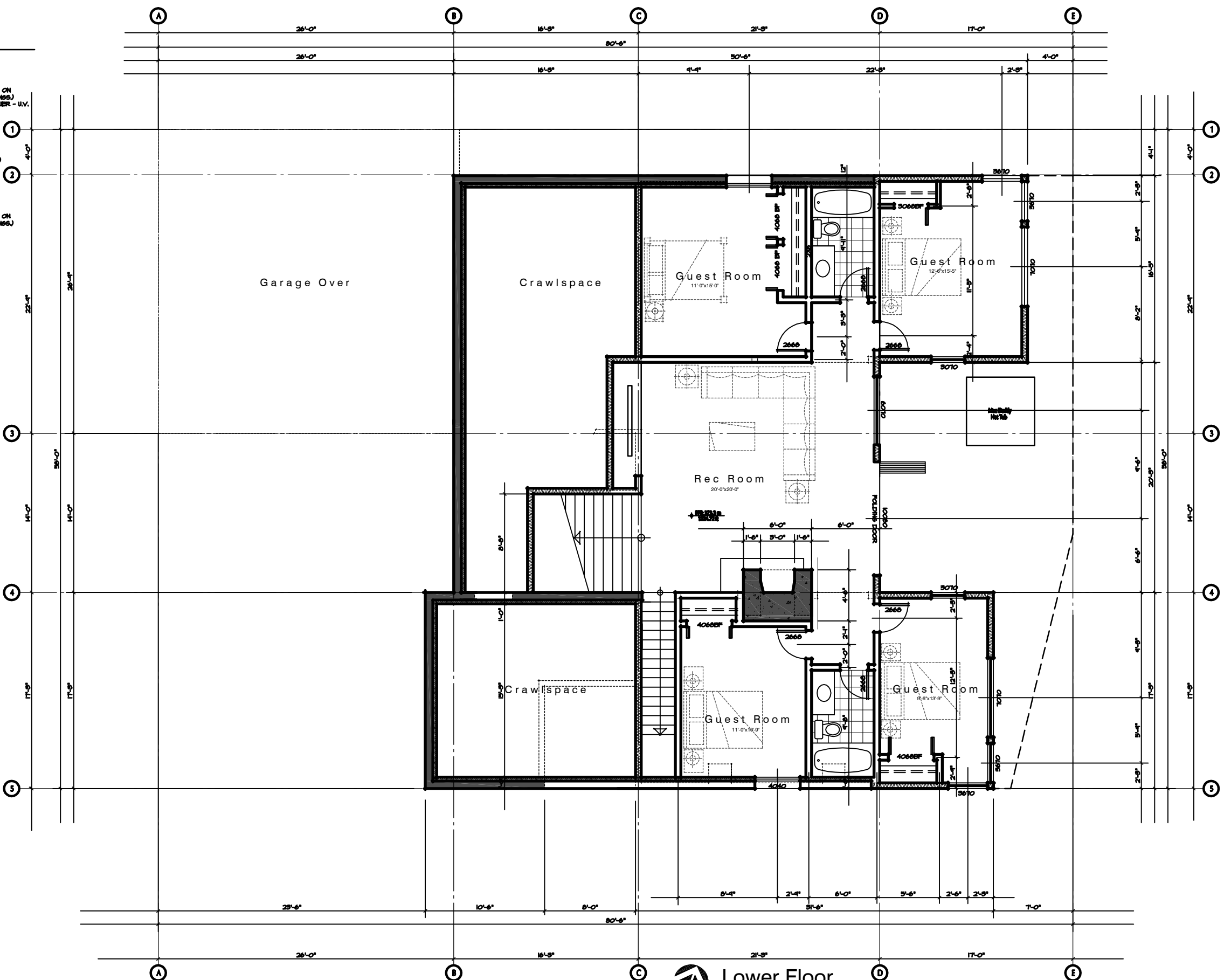
Reflected Ceiling Plan Loft Level

Contract
 Drawn
 Checked
 Date JANUARY 14, 2007
 Scale 1/4" = 1'-0"
 Sheet Number

Wall Legend

- 
TYPICAL EXTERIOR WALL ASSEMBLY
 EXTERIOR STUCCO (REFER TO ELEVATIONS) ON TWO LAYERS OF 50 MIL PAPER ON 1/2" PLYWOOD SHEATHING (REFER TO STRUCT. DN66.) ON 2x6" HOOD STUDS AT 16" O.C. (REFER TO STRUCT. DN66.) WITH R20 BATT INSULATION & 6 MIL POLY VAPOUR BARRIER - U.V. 1/2" TYPE 'X' GYPSUM HALIBOARD, PAINTED (REFER TO ELEVATIONS FOR SIDING TYPES)
- 
INTERIOR PARTITION WALL
 1/2" GYPSUM HALIBOARD PAINTED BOTH SIDES OF 2 X 4" STUDS U.N.G. AT 16" O.C. (REFER TO STRUCT. DN66.)
- 
VENTILATED EXTERIOR WALL ASSEMBLY
 EXTERIOR HOOD SIDING (REFER TO ELEVATIONS) ON TWO LAYERS OF 50 MIL PAPER ON 1/2" PLYWOOD SHEATHING (REFER TO STRUCT. DN66.) ON 2x6" HOOD STUDS AT 16" O.C. (REFER TO STRUCT. DN66.) VENTS AT TOP & BOTTOM OF WALL
- 
FOUNDATION WALL WITH FURRINGS
 2 COATS OF DAMPROOFING OR WATERPROOF MEMBRANE 1/4" PROTECTION BOARD ON 6" CONCRETE WALL (REFER TO STRUCT. DN66.) R12 5/8" RIGID INSULATION GLUED PROTECTION BOARD FOR RIGID INSL. - TYP
- 
INSULATED INTERIOR WALL
 1/2" GYPSUM HALIBOARD PAINTED BOTH SIDES OF 2 X 4" STUDS AT 16" O.C. (REFER TO STRUCT. DN66.) R20 BATT INSULATION WITH 6 MIL POLY VAPOUR BARRIER ON WARM SIDE - U.V.

Notes
 ALL EXTERIOR WALLS DIMENSIONED TO FACE OF CONCRETE AND PLYWOOD SHEATHING
 ALL INTERIOR WALLS DIMENSIONED TO CENTRE LINE OF WALLS
 ALL WINDOWS & DOORS DIMENSIONED TO CENTRE LINE
 FOR SHEAR WALL LOCATIONS REFER TO STRUCT. DN66.



Lot 24 Shelter Cove
 Central Okanagan
 British Columbia
 For
 The Fomans
Lower Floor Level

 **Lower Floor**
 1623 sf

Contract
 Drawn
 Checked
 Date JANUARY 14, 2007
 Scale 1/4" = 1'-0"
 Sheet Number

Wall Legend

TYPICAL EXTERIOR WALL ASSEMBLY
 EXTERIOR STUCCO (REFER TO ELEVATIONS) ON
 TWO LAYERS OF 30 MIN. PAPER ON
 1/2" PLYWOOD SHEATHING (REFER TO STRUCTURAL DETAILS) ON
 2x6" WOOD STUDS AT 16" O.C. (REFER TO STRUCTURAL DETAILS)
 WITH R20 BATT INSULATION & 6 MIL POLY VAPOUR BARRIER - U.V.
 1/2" TYPE X GYPSUM WALLBOARD, PAINTED
 (REFER TO ELEVATIONS FOR SIDING TYPES)

INTERIOR PARTITION WALL
 1/2" GYPSUM WALLBOARD PAINTED BOTH SIDES OF
 2 X 4" STUDS U.N.O. AT 16" O.C. (REFER TO STRUCT. DETAILS)

VENTILATED EXTERIOR WALL ASSEMBLY
 EXTERIOR WOOD SIDING (REFER TO ELEVATIONS) ON
 TWO LAYERS OF 30 MIN. PAPER ON
 1/2" PLYWOOD SHEATHING (REFER TO STRUCTURAL DETAILS) ON
 2x6" WOOD STUDS AT 16" O.C. (REFER TO STRUCTURAL DETAILS)
 VENTS AT TOP & BOTTOM OF WALL

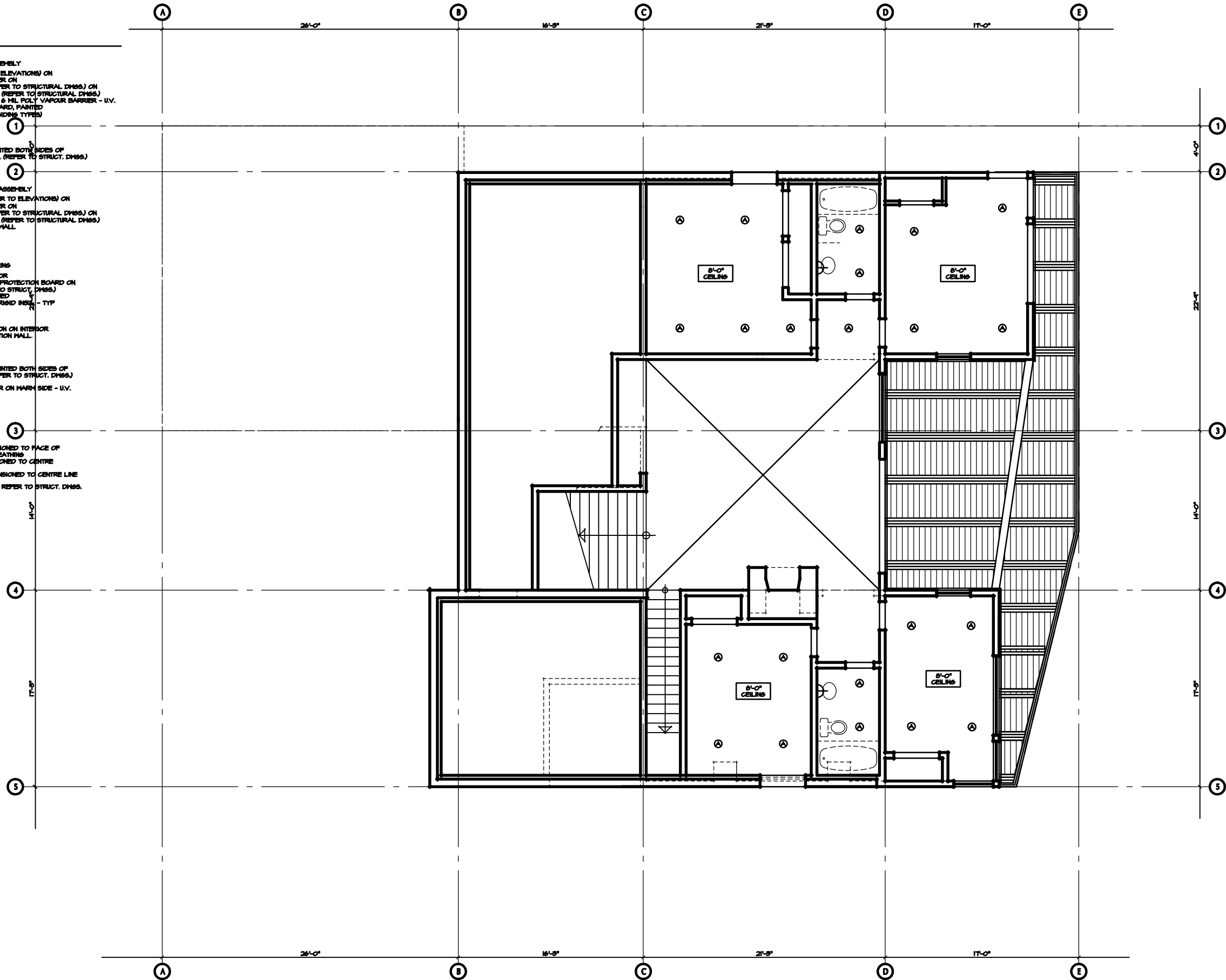
FOUNDATION WALL WITH FURRING
 2 COATS OF DAMPROOFING OR
 WATERPROOF MEMBRANE W/ PROTECTION BOARD ON
 8" CONCRETE WALL (REFER TO STRUCT. DETAILS)
 R12 5M RIGID INSULATOR GLUED
 PROTECTION BOARD FOR RIGID INSUL - TYP

AT GRAVEL SPACES:
 PROVIDE R12 RIGID INSULATION ON INTERIOR
 SIDE OF PERIMETER FOUNDATION WALL
 TO MIN 2'-0" BELOW GRADE

INSULATED INTERIOR WALL
 1/2" GYPSUM WALLBOARD PAINTED BOTH SIDES OF
 2 X 4" STUDS AT 16" O.C. (REFER TO STRUCT. DETAILS)
 R20 BATT INSULATION WITH
 6 MIL POLY VAPOUR BARRIER ON WARM SIDE - U.V.

Notes

ALL EXTERIOR WALLS DIMENSIONED TO FACE OF
 CONCRETE AND PLYWOOD SHEATHING
 ALL INTERIOR WALLS DIMENSIONED TO CENTRE
 LINE OF WALLS
 ALL WINDOWS & DOORS DIMENSIONED TO CENTRE LINE
 FOR SHEAR WALL LOCATIONS REFER TO STRUCT. DETAILS



Lot 24 Shelter Cove





Central Okanagan
British Columbia


For
The Formans

Reflected Ceiling Plan Lower Level

Contract
 Drawn
 Checked
 Date JANUARY 14, 2007
 Scale 1/4" = 1'-0"
 Sheet Number

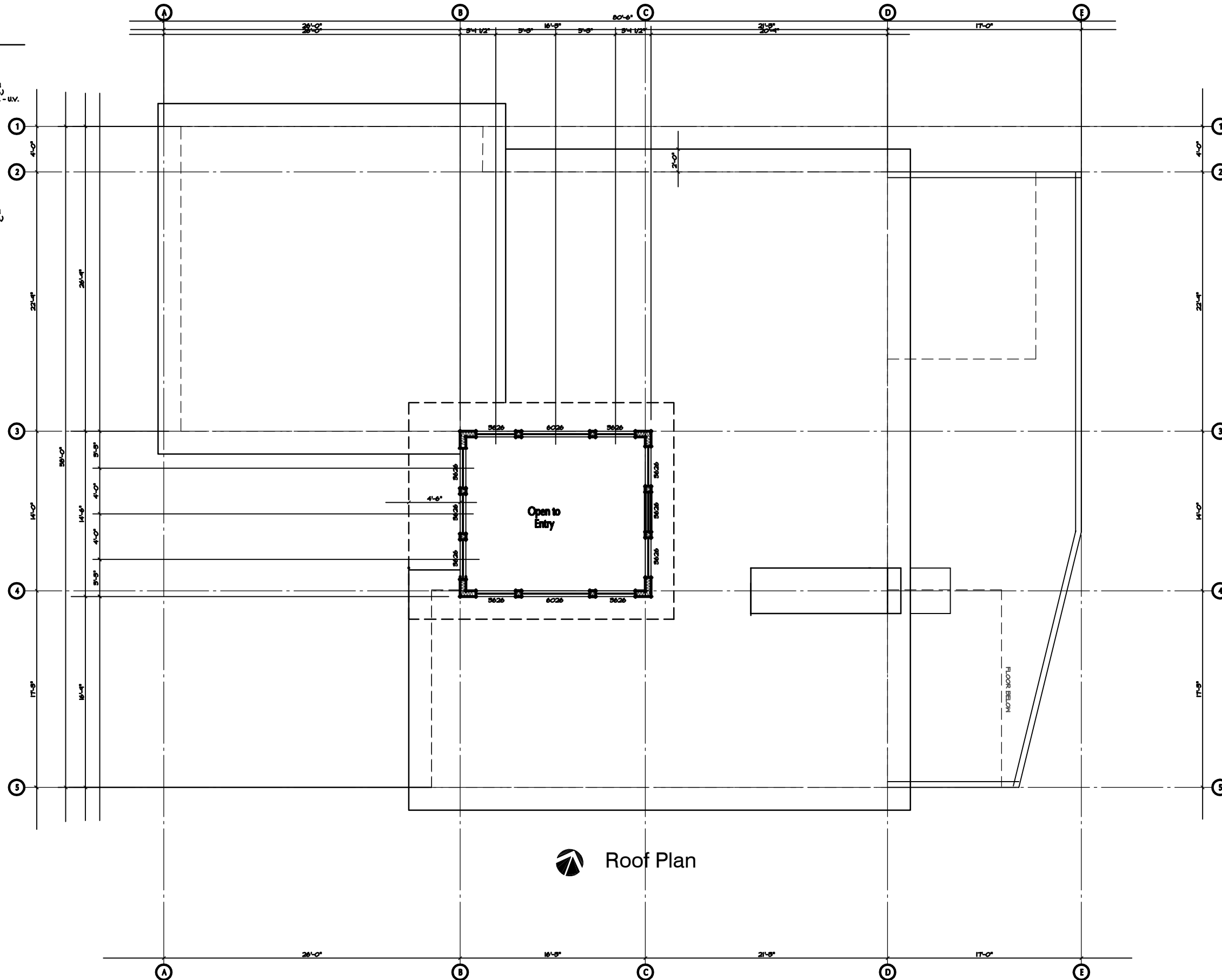
Wall Legend

-  TYPICAL EXTERIOR WALL ASSEMBLY
EXTERIOR STUCCO (REFER TO ELEVATIONS) ON TWO LAYERS OF 50 MIL PAPER ON 1/2" PLYWOOD SHEATHING (REFER TO STRUCT. DWGS.) ON 2x6" WOOD STUDS AT 16" O.C. (REFER TO STRUCT. DWGS.) WITH R-20 BATT INSULATION & 6 MIL POLY VAPOUR BARRIER - U.V. 1/2" TYPE 'X' GYPSUM HALIBOARD, PAINTED (REFER TO ELEVATIONS FOR SIDING TYPES)
-  INTERIOR PARTITION WALL
1/2" GYPSUM HALIBOARD PAINTED BOTH SIDES OF 2 X 4" STUDS U.N.O. AT 16" O.C. (REFER TO STRUCT. DWGS.)
-  VENTILATED EXTERIOR WALL ASSEMBLY
EXTERIOR WOOD SIDING (REFER TO ELEVATIONS) ON TWO LAYERS OF 50 MIL PAPER ON 1/2" PLYWOOD SHEATHING (REFER TO STRUCT. DWGS.) ON 2x6" WOOD STUDS AT 16" O.C. (REFER TO STRUCT. DWGS.) VENTS AT TOP & BOTTOM OF WALL
-  FOUNDATION WALL WITH FURRING
3 COATS OF DAMPROOFING OR WATERPROOF MEMBRANE W/ PROTECTION BOARD ON 8" CONCRETE WALL (REFER TO STRUCT. DWGS.) R12 SH RIGID INSULATION GLUED PROTECTION ED RIGID FOR RIGID INSUL - TYP

AT GRAHNSPACES:
PROVIDE R12 RIGID INSULATION ON INTERIOR SIDE OF PERIMETER FOUNDATION WALL TO MIN 2'-0" BELOW GRADE
-  INSULATED INTERIOR WALL
1/2" GYPSUM HALIBOARD PAINTED BOTH SIDES OF 2 X 4" STUDS AT 16" O.C. (REFER TO STRUCT. DWGS.) R-20 BATT INSULATION WITH 6 MIL POLY VAPOUR BARRIER ON WARM SIDE - U.V.

Notes

- ALL EXTERIOR WALLS DIMENSIONED TO FACE OF CONCRETE AND PLYWOOD SHEATHING
- ALL INTERIOR WALLS DIMENSIONED TO CENTRE LINE OF WALLS
- ALL WINDOWS & DOORS DIMENSIONED TO CENTRE LINE
- FOR SHEAR WALL LOCATIONS REFER TO STRUCT. DWGS.



 Roof Plan

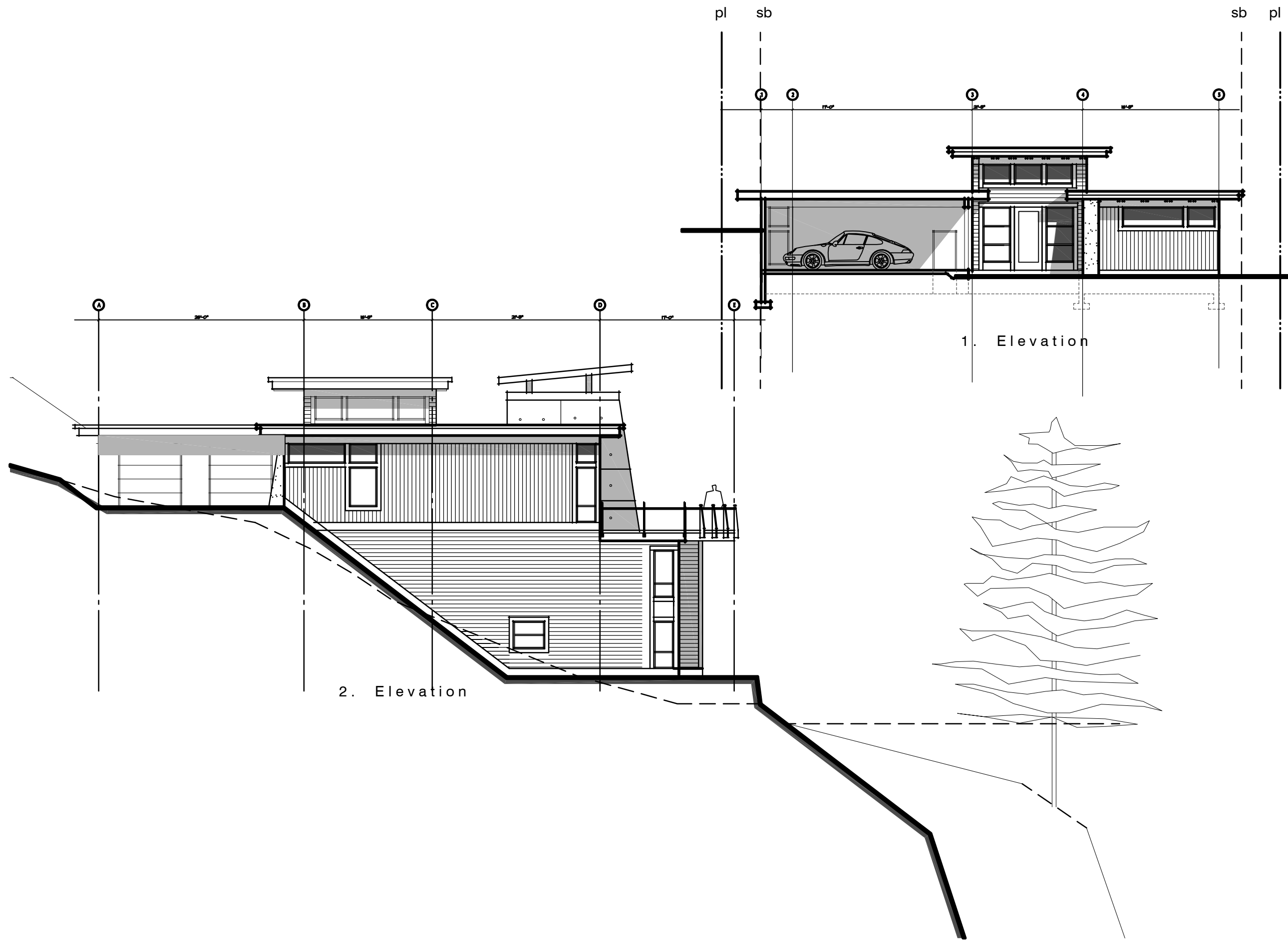
Lot 24
Shelter Cove

Central Okanagan
British Columbia

For
The Formans

Roof Plan

Contract
Drawn
Checked
Date JANUARY 14, 2007
Scale 1/4" = 1'-0"
Sheet Number



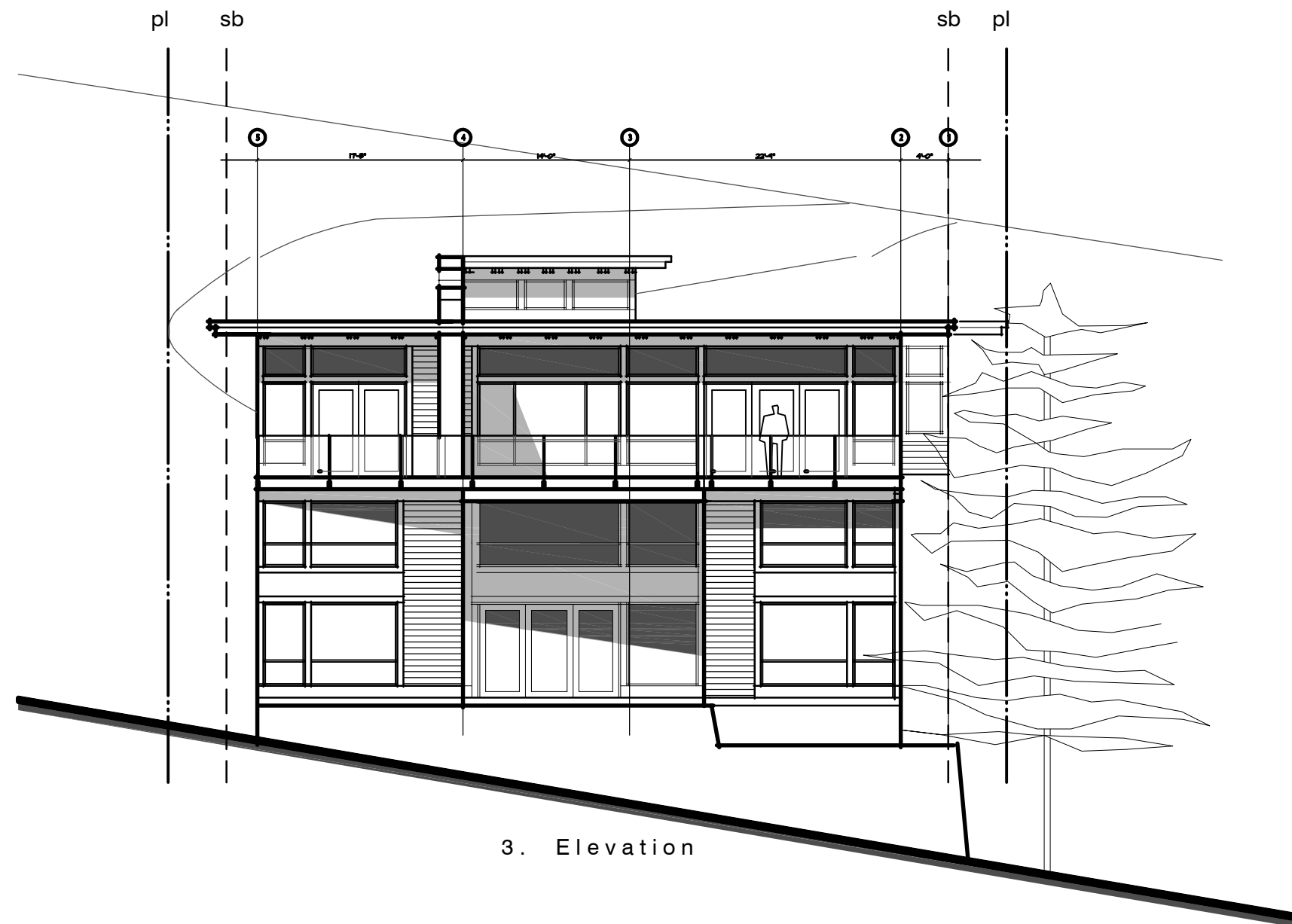
1. Elevation

2. Elevation

Lot 24
Shelter Cove
Central Okanagan
British Columbia
For
The Fomans

Elevation 1-2

Contract
Drawn
Checked
Date JANUARY 14, 2007
Scale 1/4" = 1'-0"
Sheet Number



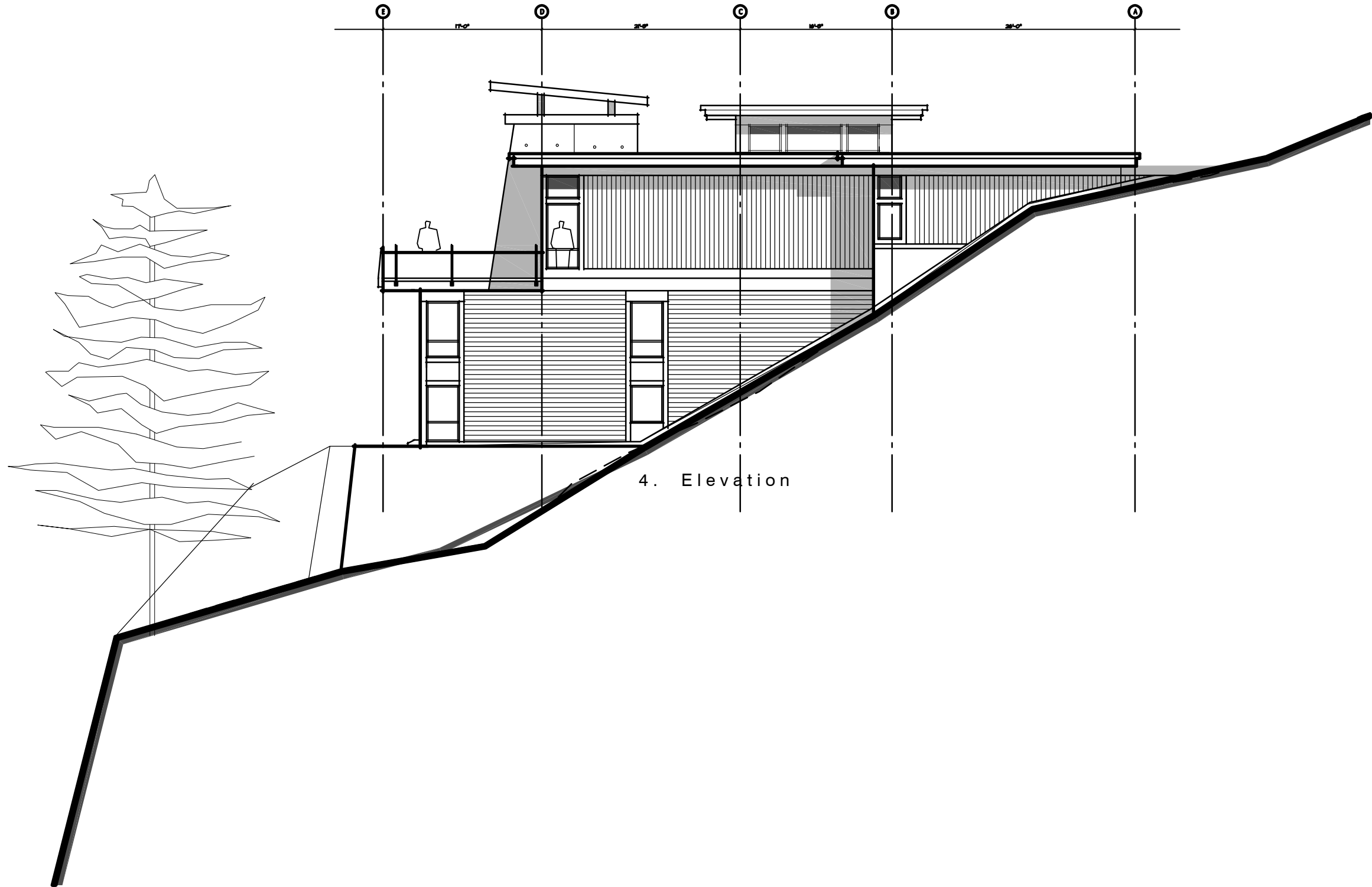
3. Elevation

Lot 24
Shelter Cove
Central Okanagan
British Columbia

For
The Fomans

Elevation 3

Contract
Drawn
Checked
Date JANUARY 14, 2007
Scale 1/4" = 1'-0"
Sheet Number



4. Elevation

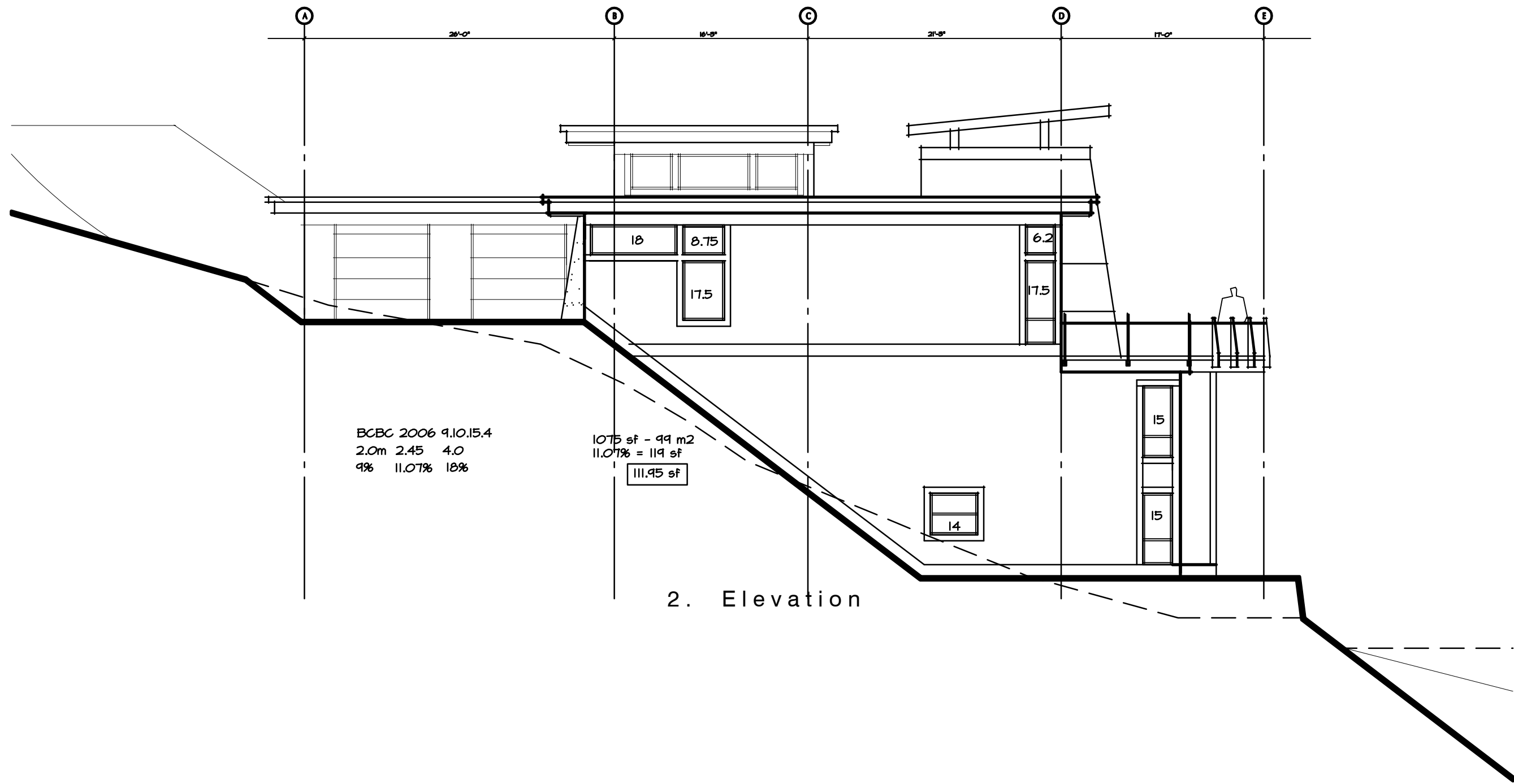
**Lot 24
Shelter Cove**

Central Okanagan
British Columbia

For
The Fomans

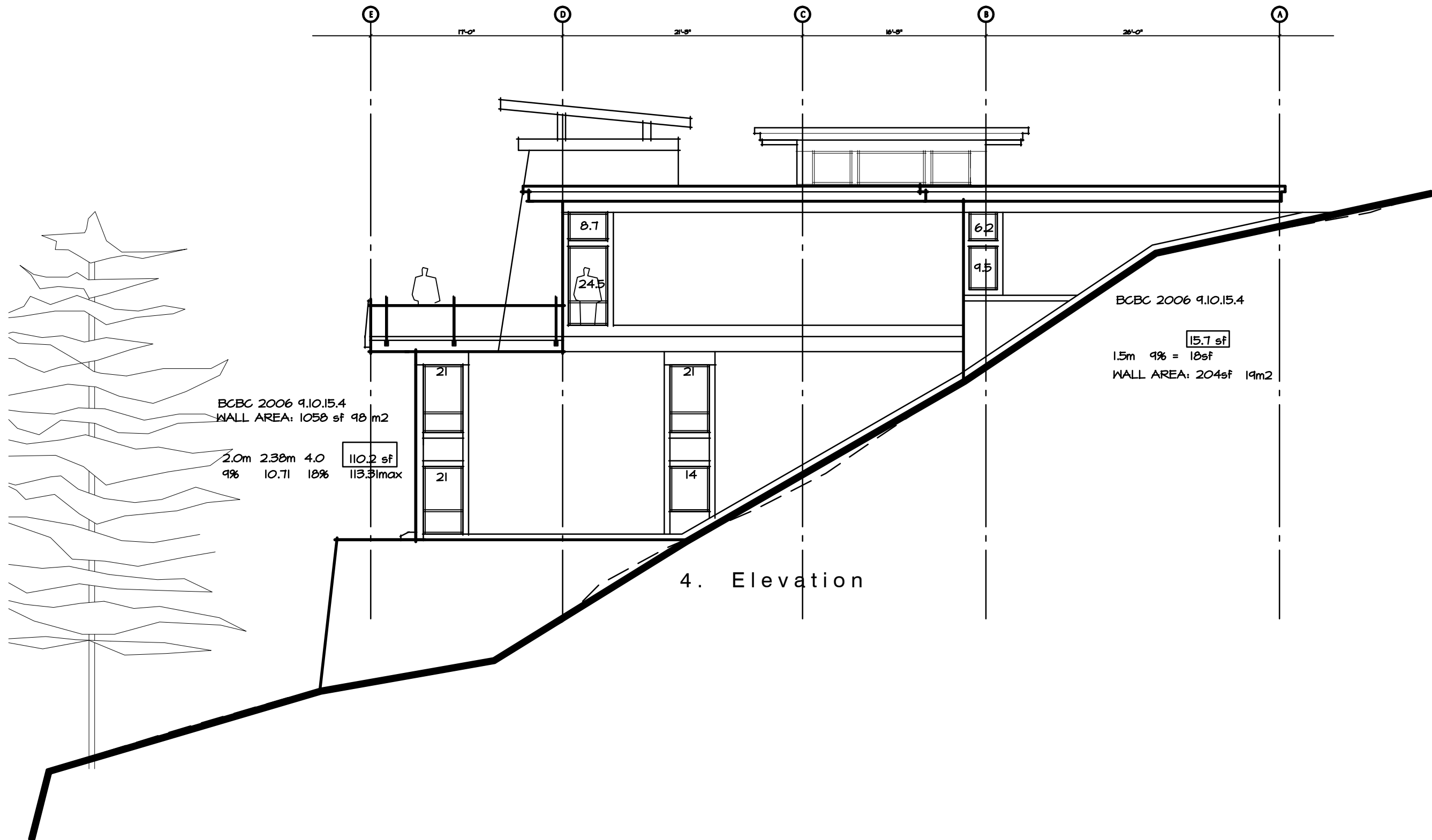
Elevation 4

Contract
Drawn
Checked
Date JANUARY 14, 2007
Scale 1/4" = 1'-0"
Sheet Number



**Lot 24
Shelter Cove**
Central Okanagan
British Columbia
For
The Fomans
Limiting Distance

Contract
Drawn
Checked
Date JANUARY 14, 2007
Scale 1/4" = 1'-0"
Sheet Number



**Lot 24
Shelter Cove**

Central Okanagan
British Columbia

For
The Fomans

Limiting Distance

Contract
Drawn
Checked
Date JANUARY 14, 2007
Scale 1/4" = 1'-0"
Sheet Number